
Comfort-Aire®

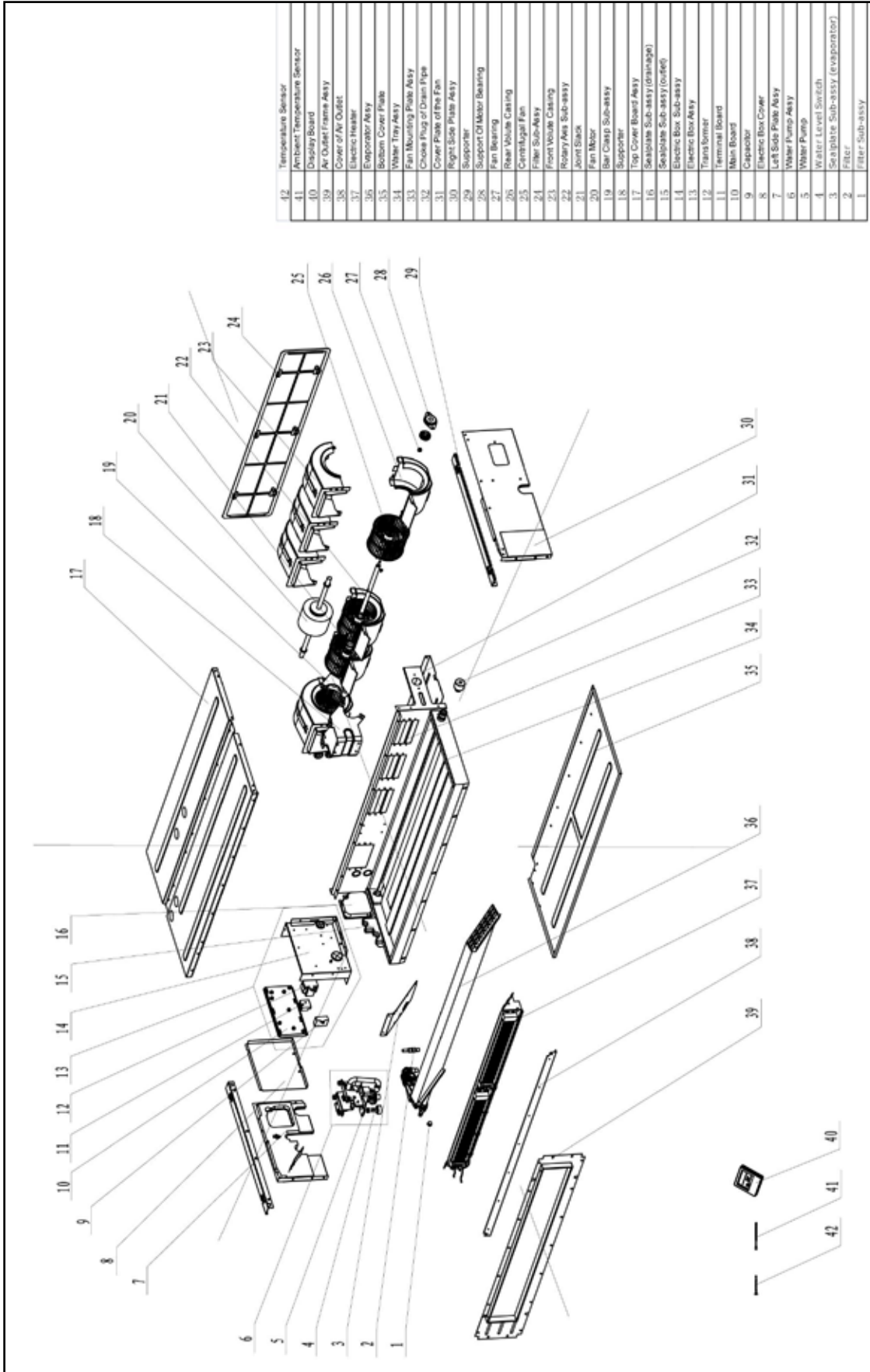
Century®

MARS
Delivering Confidence

REPLACEMENT PARTS LIST

InverterFlex Series®
Indoor Ducted Mini-Split
B-VFH24DA-1
Heat Pumps

EXPLODED VIEW



42	Temperature Sensor
41	Ambient Temperature Sensor
40	Display Board
39	Air Outlet Frame Assy
38	Cover of Air Outlet
37	Electric Heater
36	Evaporator Assy
35	Bottom Cover Plate
34	Water Tray Assy
33	Fan Mounting Plate Assy
32	Cross Plug of Drain Pipe
31	Cover Plate of the Fan
30	Right Side Plate Assy
29	Supporter
28	Support Of Motor Bearing
27	Fan Bearing
26	Rear Volume Casing
25	Centrifugal Fan
24	Filter Sub-Assy
23	Front Volume Casing
22	Rotary Axis Sub-assy
21	Joint Stack
20	Fan Motor
19	Bar Clamp Sub-assy
18	Supporter
17	Top Cover Board Assy
16	Seaplate Sub-assy (drainage)
15	Seaplate Sub-assy (outlet)
14	Electric Box Sub-assy
13	Electric Box Assy
12	Transformer
11	Terminal Board
10	Main Board
9	Capacitor
8	Electric Box Cover
7	Left Side Plate Assy
6	Water Pump Assy
5	Water Pump
4	Water Level Switch
3	Seaplate Sub-assy (evaporator)
2	Filter
1	Filter Sub-assy

REPLACEMENT PARTS

Location	Part Name	Quantity	Part No.
1	Filter Sub-Assy	1	07210028
2	Strainer	1	07212001
3	Sealplate sub-assy (evaporator)	1	01495317
4	Water Level Switch	1	45020216
5	Water Pump	1	43130324
6	Water Pump Assy	1	15405200082
7	Left Side Plate Assy	1	01315334
8	Electric Box Cover	1	01424253
9	Capacitor CBB61	1	33010027
10	Main Board	1	30226338
11	Terminal Board	1	420111041
12	Transformer	1	4311023303
13	Electric Box Assy	1	01395000001
14	Electric Box Sub-Assy	1	01395200071
15	Sealplate sub-assy (outlet)	1	01495316
16	Sealplate sub-assy (drainage)	1	01495315
17	Top Cover Plate Sub-Assy	1	01265339
18	Motor Support	1	01804348
19	Bar Clasp	4	70819522
20	Fan Motor	1	1570411102
21	Joint Slack	1	73018731
22	Rotary Axis Sub-Assy	1	73018000013
23	Front Volute Casing	4	26905205
24	Filter Sub-Assy	1	11725208
25	Centrifugal Fan	4	10425200
26	Rear Volute Casing	4	26905206
27	Fan Bearing	1	76512210
28	Support Of Motor Bearing	1	02285200001
29	Supporter	2	01895225
30	Right Side Plate Assy	1	01305263
31	Cover board (Fan motor)	1	01265338
32	Choke Plug of Drain Pipe	1	76815214
33	Fan Motor Mounting Plate Sub-Assy	1	01325200005
34	Water Tray Assy	1	01285334
35	Bottom Cover Plate	1	01265337
36	Evaporator Assy	1	01025200025
38	Cover of Air Outlet	1	01265335
39	Air outlet frame assy	1	01375224
40	Wired stat	1	30296317L08294
Not Shown	Signal Wire for Wired Controller	1	40010232
41	Ambient Temperature Sensor	1	39000206
42	Temperature Sensor	1	390001982G

Due to ongoing product improvements, specifications and dimensions are subject to change and correction without notice or incurring obligations. Determining the application and suitability for use of any product is the responsibility of the installer. Additionally, the installer is responsible for verifying dimensional data on the actual product prior to beginning any installation preparations.

Incentive and rebate programs have precise requirements as to product performance and certification. All products meet applicable regulations in effect on date of manufacture; however, certifications are not necessarily granted for the life of a product. Therefore, it is the responsibility of the applicant to determine whether a specific model qualifies for these incentive/rebate programs.

Comfort-Cire®  **Century**

1900 Wellworth Ave., Jackson, MI 49203 • Ph. 517-787-2100 • www.marsdelivers.com

